



Miller Large Wrecker

Options & Features

Walk-Around 2013

Electrical and Lighting Options

MMO System

Standard on 7035, 9055 and 1140- 1075S Rotators
Optional – 4024, 5130, 5230, V-50, V-70 and V-100, 1130



Three Solid-State mVECS for wiring junctions, Located in drivers side forward toolbox or on the turret for a Rotator.

Also new R260 remote receiver in same location, no external antenna



Two multi-function backlit touch-screen displays
(1 in the cab, 1 at the rear controls)

Wireless Remote System

- 4024, 5130 & 5230 – 8 Function Underlift Remote Standard
Optional 14 Function Available



- 7035, 9055 – 14 Function Underlift & Boom Remote Standard

- All Rotators – 8 Function Underlift Remote Standard



- 3212 – Option to upgrade to the 14 Function Boom and Underlift Remote

2012 Touchscreen Displays



2 touch screens are standard with either an MMO or MMGO system.

MMGO System (Rotators)

Allowable Load

Parts of Line

Load on Boom



Boom Extension (from pin)

Elevation Angle

Radius from Center (for charts)

Rotational Angle

2 touch screens are standard with an MMO and MMGO system. But only the rear display shows load information with the optional MMGO system.

Century MMO & Remote Availability

Description	3212	4024/5130/5230	7035/9055	7035XP/ 9055XP	1060 Stick	1130/1140/1060S/ 1075S
8 fxn wireless remote only	x	124004404	x	x	124004404	124004404
8 fxn remote and MMO power dist	x	124004537	x	x	124004537	124004510
14 fxn wireless remote only	124004431	124004408	124004408	x	x	x
14 fxn remote and MMO power dist	x	124004511	124004511	x	X	x
XP MMO Power dist. and remotes	x	x	x	124004512	X	x
XP Omit Power Dist (incl remotes)	x	x	x	124004410	X	x
8 fxn remote and MMGO power dist	X	X	X	X	X	124004509

Red=Standard

Optional Switch Panel

Standard on 4024, 5130, 5230, 9055B and 1130

124004404 – Kit for new Units – 4024 and Larger

124004197 – Kit for new Units - 3212



174013109 – Just the Switch Panel for replacement needs, Does Not include the Underlift Switches shown above

Air PTO Override

124002680 (Sgl-Acting) 4024-9055, XP, 1130, 1140

124002681 (Dbl-Acting) 1060S/1075S Rotator

Double Acting



Allows for manual PTO engagement if there is an electrical failure.



Left – Single Action – also shows the yellow knob for the pusher axle air pressure adjustment.

Flasher Control Box

124004140 - All Models



Video

Five wire hookup-Requires LED lights-10A maximum

Flashes all marker lights on the wrecker body

Strip Lamp Kits



Fits all '02 and newer aluminum toolboxes

124004215 - 180" CB Rotator (All Outriggers)

124004217 - 3212 CX 138CA

124004411 - 3212 CX 120CA

124004218 - Standard 3212 (84" Body)

124004219 - 138" CA

124004220 - 206" CA/180" CB

124004225 - 156" CA

124004226 - 182" CA/156" CB

124004227 - 230" CA/204" CB

124004221 - 24" Tunnel

124004222 - 30" Tunnel

124004223 - 36" Tunnel

124004224 - 48" Tunnel

124004244 - 40" Above Rails Box (Tandem Steer)

Round LED Underlift Lamps

124004448 (pair) All Models - includes bracket



Double-Bulb Rectangular Halogen Work Lamps

124002723 (pair) All Models



Xenon Boom Lamps - Rotator

124002724 (pair)



Single Bulb Oval Halogen Work Lamps

124002725 (pair) All Models



Swivel Lamps

124002263 (pair) - All Models



Docking Lights

124002717 (pair)

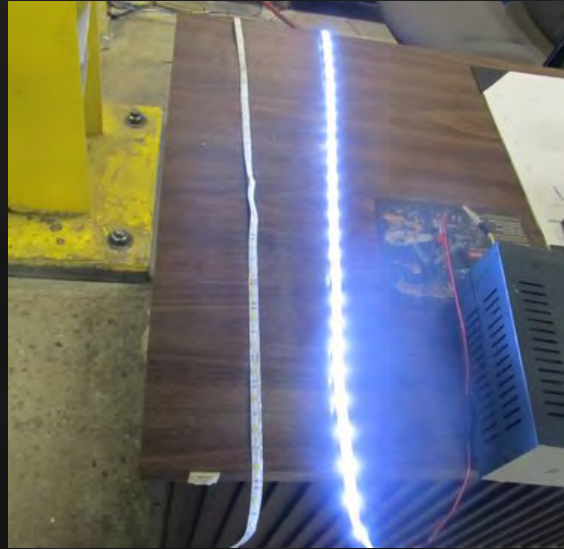
Can also be used for a Front Outrigger Light (rotators)



3 pair shown

White LED Toolbox Strip Lights

Now standard on all units V30/3212 and larger



Retrofit kits available for 2002 and newer HD Bodies – 0311394

Minimum Order is 6 and then in groups of 3 (6,9,12, etc)



Whelen LED Micro-Edge Pod

124002708 (pair)



For Rotator top-beam front
outrigger, use 124002812-
includes bracket



Whelen 72" 16-Head LED Lightbar

124002710 - 4 Corner Amber, Halogen Work Lights, Brake-Turn-Tail



Whelen 60" 8-Head LED Lightbar

174001984 - 4 Corner Amber, Halogen Work Lights, Brake-Turn-Tail



Whelen 60" 4-Head LED Lightbar

174002711 - 4 Corner Amber, Halogen Work Lights, Brake-Turn-Tail

M6 Clear Lens Amber LED

124004444 (pairs)



Additional Lighting Options

Flex Lamp Kit
124004452 (pair)



Domintator Lamp Kit
124004449 (pair)





Pylons

Optional Aluminum Tubular Pylons

3212 - 33" - 124002677



CX2 body - 42" - 124004117



Optional Aluminum Tubular Pylons

38" - 124003003

Shown with 2 pairs 124004444 (M6)



51" - 124003005



Aluminum Tubular Pylons can be painted if desired

Optional Aluminum Tubular Pylons

43" – 124004475



38" – "Double Stack"
124004254



Allows for two light bars



For use with Peterbilt & Kenworth Extended Day Cabs



Kenworth



Peterbilt

Stylized Pylons

38" – 124004459

41" – 124004498

48" – 124004508

Pylon includes a 72" 16 Head LED Lightbar



Optional Aluminum 3" Pylon Spacer

124002678



Pylon Wings

124002478 (pair)



Does not Fit the 2009 38" Pylon, 124004254

Fits the 3003 & 3005 Pylons

Does not include lights

Rotator Aluminum Tubular Pylon

124002695 (includes electrical swivel) 1060S/1075S

124004150 (no swivel required) 1130/1140/1060 Fixed



Can be painted if desired

Stainless and Dress-Up Options Saddle Tunnel and Tool Boxes

Tailboard Dress Up Kits

Diamond Plate

4024 – 124002464

5130, 5230 – 124002402

7035, 9055 - 124004072

Smooth

4024 – 124002464S

5130, 5230 – 124002402S

7035, 9055 – 124004072S



Adding Optional D-Rings will not affect the Part Number

1 1/4" Handrail Kit

124002512



PolyBilt Body Option

Tandem CBs - 156, 180, 204 or 228

Tri-Axle CBs - 180, 204 or 228

Body Shown with Optional Lighting



Century Crossover Tunnel

124004446

Crossover Boxes are available on the following bodies.

4024 – 156" CA and Larger

5130 – 182" CA / 156" CB and Larger

5230 – 156" CB and Larger

7035 – 180" CB and Larger

9055 – 180" CB and Larger



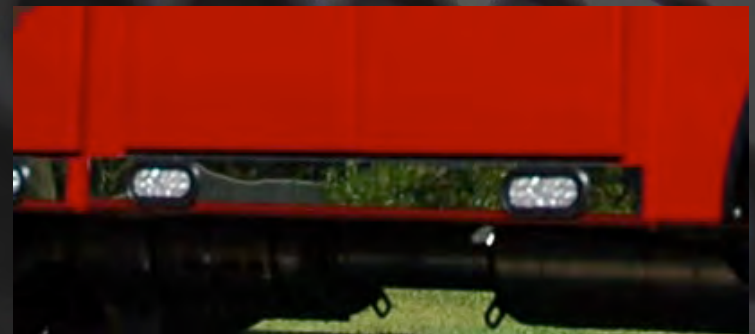
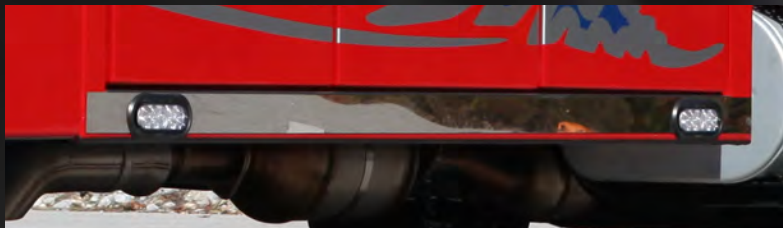
3212 Stainless Kit

CX2 – 120" and/or 138" CA

124002613

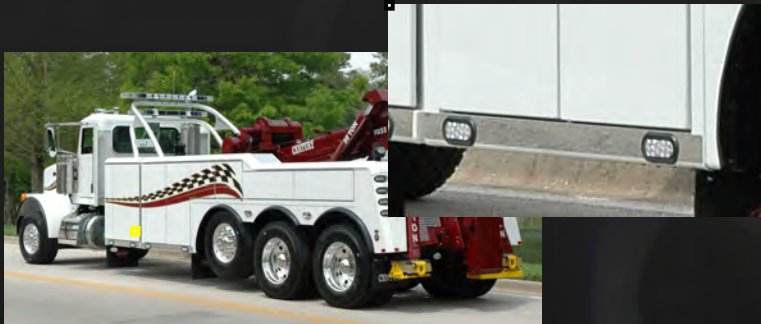
84" Tall Body

124002612



Tunnel Box Stainless Shown is Sold Separately

Stainless Kits



2-Door - 124002611

Tunnel Box Stainless Shown is Sold Separately



3-Door – 124002613



4-Door - 124002614



Rotator - 124002610

Rotator Kit will Fit both Standard and H-Beam

Tunnel Box Stainless Shown is Sold Separately



24" Tunnel
124004384 (4024 and larger)
124004385 (3212 and 600R)
Stainless Kit 124004403



30" Tunnel Box
124004386
Stainless Kit 124004402



36" Tunnel Box
124004387 (4024 and larger)
124004388 (3212 and 600R)
Stainless Kit 124004256



48" Tunnel Box (Door)
124004389 (4024 and larger)
Stainless Kit 124002633



124004538 (3212 or 600R)
Stainless Kit 124002633



48" Tunnel Box (Rollup)
124004138 (4024 & Larger)
Stainless Kit 124002633

Toolbox Options

Polished Rails



The Rails are polished from the front to the rear, stopping at the top taillight.

Not Available on PolyBilt Body

Stainless Fenderettes (each)

124004593



(3 Shown)



Kenworth RH Dummy Stack

124004499



Forks & Attachments

Fork Kit

Standard on:

4024, 5130, 5230, 7035, 9055, 1130, 1140, 1060, 1060S, 1075S2, 1075S



Forks come in Black Primer for Parts Orders

Additional Lift Forks & Attachments

Spring Lift Adapter
124001389 (pr)



Standard on:
4024, 5130, 5230, 7035, 9055,
1130, 1140, 1060, 1060S, 1075S2, 1075S

Fork Reducer
124002430 (pr)



Optional on All Models

Lift Eye Attachment

124002634 (pr)
Optional on All Models



U-Bolt Adapter

124002632 (pair)
Optional on All Models,
Suggested 5130 and Larger Only



Rear Tows Only!



Additional Crossbar Attachments

Offset Fork Holder (pr)



Standard on 5130 and Larger Units
5" Crossbar – 124001718

Standard on 4024
4" Crossbar - 124002515

Standard on 3212
3212 Crossbar - 124002516

Riser Bracket (pr)



Standard on ALL Rotators
Optional on all other Models

4" Crossbar – 124001724

5" Crossbar – 124001514

3212 Crossbar - 124004078

Chain Hook Adapter (pr)



Standard on 5130 and Larger Units
5" Crossbar – 124001420

Standard on 4024
4" Crossbar - 124002048

Standard on 3212
3212 Crossbar - 124002517

Offset Fork Holder Extension

124002230 (pr)



Offset Fork Holder is shown just for Reference

Optional on All Models, Suggested 5130 and Larger Only

Chain Hook Adapters

124002229 (lh/rh pr)



Optional on All Models,
Suggested 5130 and Larger Only

Pintle Hook, Tow Ball, & 5th Wheel Attachment for 3212

124002645



Pintle Hook Kit

124002211

Optional for 4024 and Larger Units



King Pin Attachment Kit

124001948



Requires 124002211 Pintle Hook Kit

Optional for 4024 and Larger Units

5th Wheel Adapter Kit

124001833



Requires 124002211 Pintle Hook Kit
Optional for 4024 and Larger Units
For Empty Trailers Only-24K Capacity

Additional Attachments

Tow Ball Adapter
124002431



Shown with Optional Convert-a-Ball Shank

Convert-a-Ball
174017093



Includes Adapter Shank Shown on the Tow Ball Adapter

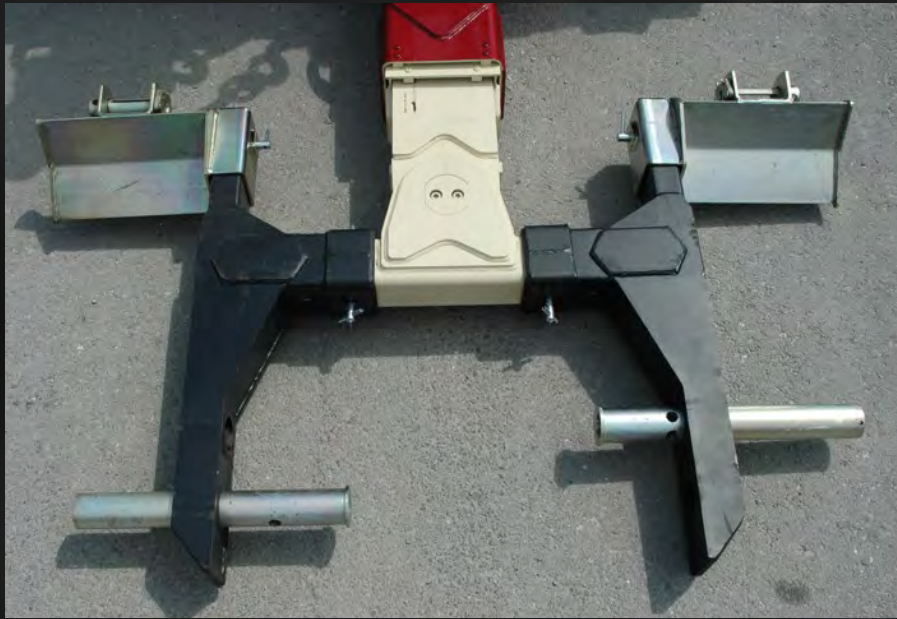


Requires 124002211 Pintle Hook Kit



Euro Bus Lift

124002467 Optional on 5130 and Larger units, 5" x 5" crossbar



Bus Lift

124001914 - 5x5 Crossbar (5130 and Larger)
124002033 - 4x4 Crossbar (4024)



XHD Tire Lift

Optional for 50 Ton Units and SDU-4 Underlifts
New Unit - 124002808



Field Retrofits

124002853 – Century - Includes XHD 5x5 Crossbar

124004081 – Vulcan - Includes XHD 5x5 Crossbar

For units already having a 5x5 Fabricated Crossbar

123002808 – Century and Vulcan

Bus Lift Storage System

124002587 For 5x5 Crossbar
Optional on 5130 and Larger Units
Does not fit Rotator Boxes



Can be used with both 124001914 (Heavy Duty) and 124002808 (Extra Heavy Duty) lift systems

External Bus Lift Storage System

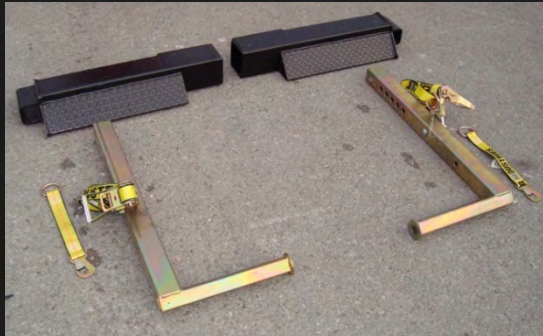
124004380 For 5" x 5" Crossbar
Optional on 5130 and Larger Units



Can be used with both 124001914 (Heavy Duty) and 124002808 (Extra Heavy Duty) lift systems

6,000 lb. L-Arm System

124001738 For 5x5 Crossbar
Optional on 5130 and Larger Units



124002416 for a 4x4 crossbar in a 4024

Rear Outrigger Options

Grater Blade Attachment (pr)

124002401



D-Ring Kit (pr, 12x15 Spades)

124002537



Rear Spade Extension (each)

124002618



For Use with 4024, 5130, 5230, 7035, 9055 without the Optional Outriggers

Ground Penetrating Plate

124004091



Fits Rotator, Integrated, and XP units
Sold each, includes a pin

Accessories

Wide Load Bars

36" Wireless LED

124004494



Includes 7 Way Plug-in Transmitter

36" -

124004494 – (cord sold separately)



174019033 – 60' 7 Way Cord

Safety Chain Roller Kit

Integrated Version - 124004450 - Optional All Models
Rotator Version – 124004473- (N/A with Dual H-Beam)



Allows for quicker retrieval and return of safety chains into the safety chain pockets

Dual Color Camera Kit

124004442 - Optional on All Units

Includes the color screen inside the cab.



Rotator Placement



Century Integrated Placement

Tailboard Remote

124001979 - Optional on All Units



Rocker switch style replaces push-button style

Lighted Controls – Integrated Units

124002796- Factory Install or Field Retrofit



Lighted controls for **XP UNITS** are available as
124002815 for Factory install or 124002813 for Field Retrofit

Color Control Handle Kit

124004470- Factory Install or Field Retrofit



Includes enough colored handles to do both sides of a large unit from 4024 through a 6-winch Rotator

**Shackles, Straps, Chains,
Snatch Blocks
and Related Items**

Washable Chain Box

124002698



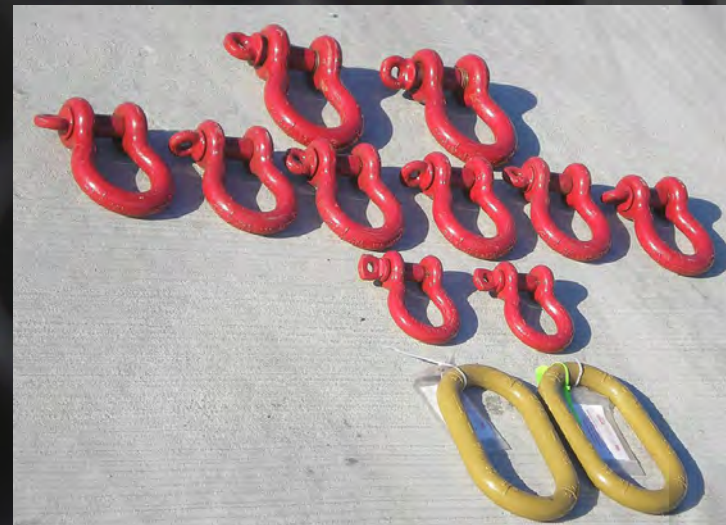
Optional on 4024, 5130, 5230, 7035, 9055, and 1060 Units

Alloy Screw-Pin Shackle Kit

124004083 - The shackle kit was made to fit with the Endless Loop Strap Kit (124002697, Sold Separately)

Kit Includes:

- 2 ea) 1 1/4" Alloy Master Links 18 Ton
 - 2 ea) 1" Alloy Screw-Pin Shackles 8 1/2 Ton
 - 6 ea) 1 1/4" Alloy Screw-Pin Shackles 12 Ton
 - 2 ea) 1 1/2" Alloy Screw-Pin Shackles 17 Ton
- All Made in USA



Optional on all models

Endless Loop Strap Kit

124002697



COLOR CODE	CAPACITIES IN POUNDS			MINIMUM LENGTH	INCLUDES TWO EACH
	VERTICAL	CHOKER	BASKET		
YELLOW	8400	6720	16800	3 FT	4 FT, 6FT
RED	13200	10560	26400	3 FT	8 FT, 12FT
BLUE	21200	17000	42400	6 FT	12 FT, 16 FT



Optional on all models

(124004521 is the same kit but without the blue straps, for 3212)

Chain Kit

174025093



- 2 - 5/16" - 3/8" Ratchet Binders
- 2 - 5/16" x 10' Chains
- 2 - 5/16" x 20' Chains
- 2 - 3/8" x 10' Chains
- 2 - 3/8" x 20' Chains
- 2 - 1/2" x 10' GR100 Chains
- 2 - 1/2" x 20' GR100 Chains

Optional on all models, suggested for 4024 and Larger Units

(124002523 is the same kit but without the 1/2" chains, for use with 3212)

Ratings Labels

Decals only 0501656
(included with 174025093 and 124002523 Chain Kits)

CHAIN RATING

GRADE 100 - BLUE HOOKS

SIZE:	WORKING LOAD LIMITS
• 1/2"	15,000 LBS
• 5/8"	22,600 LBS

GRADE 70 - GOLD HOOKS

SIZE:	WORKING LOAD LIMITS
• 5/16"	4,700 LBS
• 3/8"	6,600 LBS
CHAIN BINDER	6,600 LBS

CABLE RATINGS

MAIN BOOM & DRAG WINCH

20,000 LB 5/8" X 6 X 37 IWRC XIPS
35,000 LB 5/8" X 6 X 37 IWRC XIPS

50,000 LB 3/4" X 6 X 37 IWRC XIPS
60,000 LB 7/8" X 6 X 37 IWRC XIPS

5/8" CABLE WORKING LOAD LIMIT: 11,600 LBS
5/8" CABLE BREAKING LOAD LIMIT: 41,200 LBS

3/4" CABLE WORKING LOAD LIMIT: 16,560 LBS
3/4" CABLE BREAKING LOAD LIMIT: 58,800 LBS

7/8" CABLE WORKING LOAD LIMIT: 22,400 LBS
7/8" CABLE BREAKING LOAD LIMIT: 79,600 LBS

ENDLESS LOOP SLINGS AND SCREW-PIN SHACKLES				
SIZE/LENGTH	SLING COLOR/ USE SHACKLE	CAPACITIES IN POUNDS		
		VERTICAL	CHOKER	BASKET
1" ALLOY SHACKLE		17,000	17,000	17,000
4'	YELLOW	8,400	6,720	16,800
6'	YELLOW	8,400	6,720	16,800
1 1/4" ALLOY SHACKLE		24,000	24,000	24,000
8'	RED	13,200	10,560	26,400
12'	RED	13,200	10,560	26,400
1 1/2" ALLOY SHACKLE		34,000	34,000	34,000
12'	BLUE	21,200	17,000	42,400
16'	BLUE	21,200	17,000	42,400
1 1/4" ALLOY MASTER LINK	ALLOY	36,200	36,200	36,200

5/8" GR100 Chain Kit

124002820



Includes two each 5/8 GR100 10' and 15' long with a grab hook on each end

Optional on all models, suggested for 1075S and 1075S2

3/8" EDOG Eliminator GR100 Chain Bridle

124004153



Optional on all models

1/2" EDOG Eliminator GR100 Chain Bridle

124004588



Optional on all models, suggested for 9055 and Larger Units

1/2" GR100 Foundry Hook Kit

124004156 (2 Hooks, 2 Shackles)



Optional on all models - Does not include the Blue Chain

Crosby Alloy Snatch Blocks

8 Ton - 124001058



Optional on all models

Suggested for units with 35K and smaller winches

12 Ton - 124001886



Optional on all models

Suggested for units with 50K and Larger Winches

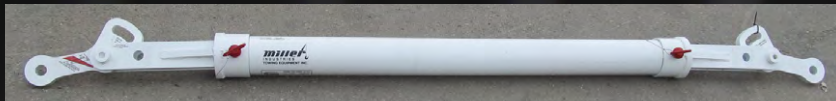
Made in USA

Spreader Bar



124004417 (each)

Can be configured for 100", 105" and 110" lengths



Short Spreader Bar Tube –

Allows for 58", 63" and 68" lengths

124004417 (each)



Shown with optional shackles and straps



Optional Mounting Kit - 124004436

Swivel Equalizer

124004471 – 17 Metric Tons (37,400 lbs.)

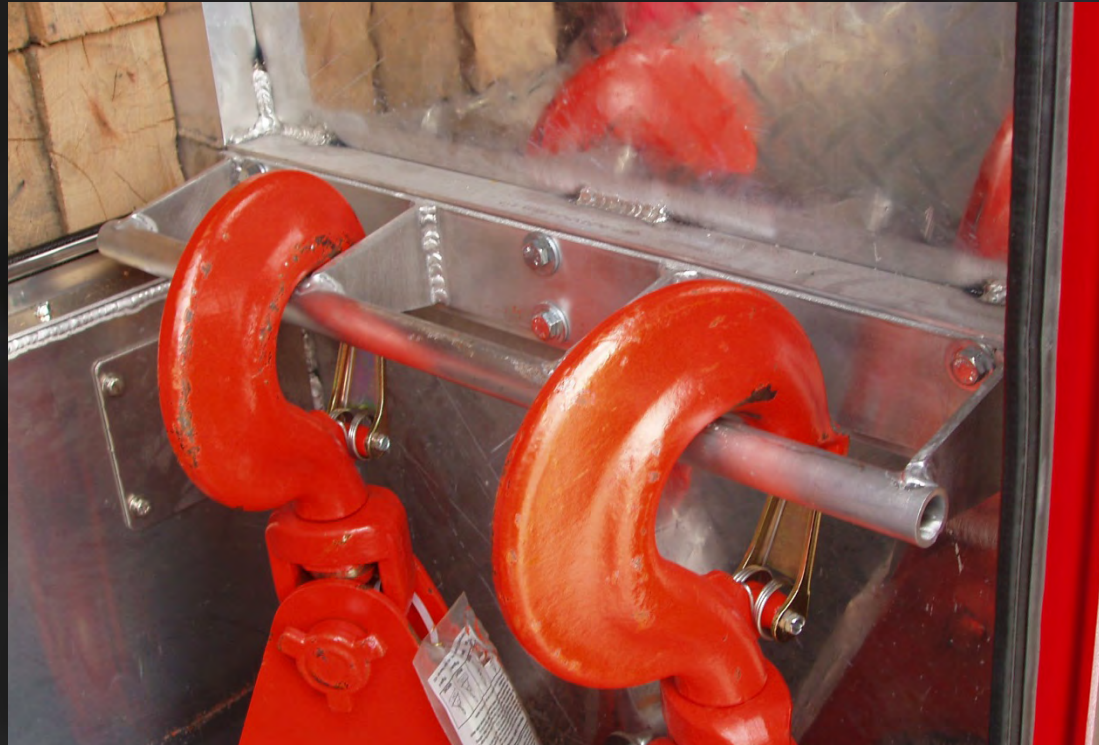


This attachment features a bearing that allows you to easily rotate a load, making it an ideal attachment to use with a rotator when trying to position equipment or machinery.

Tool Compartment Organization and Storage

Snatch Block Bar

124004132 (ea)



Can be used in all large tunnel boxes-snatch blocks sold separately

Dual Snatch Block Storage Kit

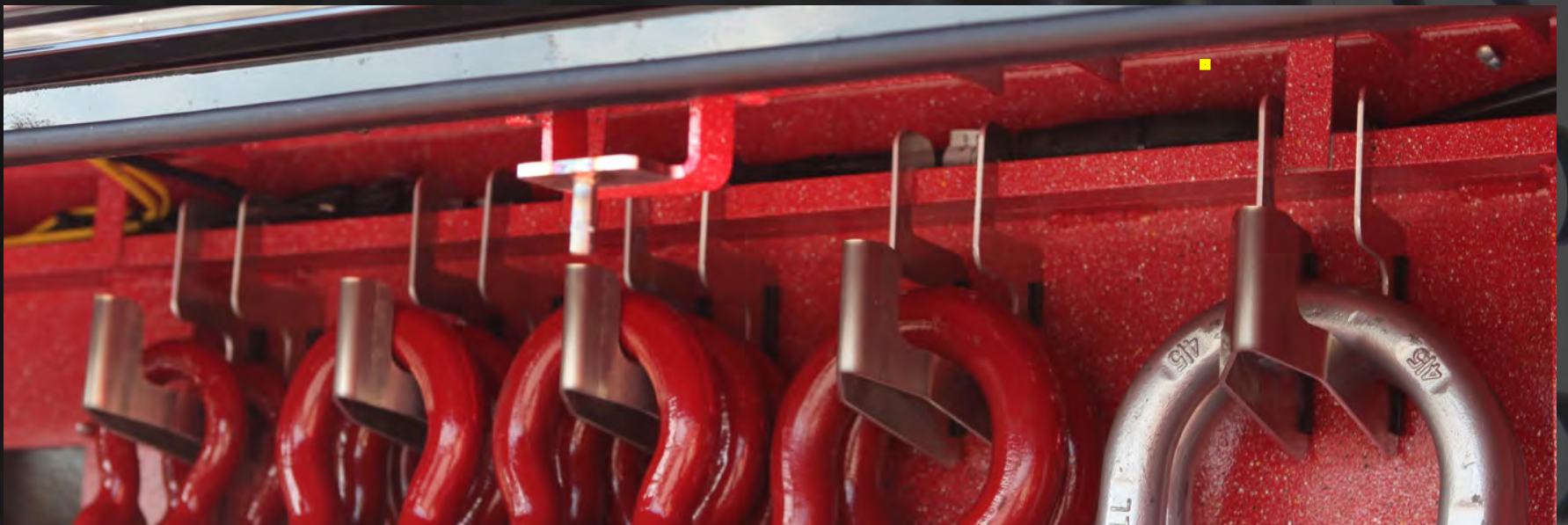
124004463 (ea)



Can be used in all large boxes, snatch blocks sold separately.
2 kits shown, each kit contains 1 top and 1 bottom bracket

Shackle and Accessory Hanger Kit

124004414



Includes 5 hangers - does not include shackles

Tunnel Box Attachment Storage

124004539



Attachments and Spreader Bar Tube Storage Not Included.
Works in 36" and 48" Tunnel Boxes

Tunnel Box Fork Storage

36" Tunnel Box - 124004540



48" Tunnel Box - 124004541



Forks and attachments shown are not included

Collapsible Folding Ladder

124004413



Modular Toolboxes



3-Drawer 124002667



4-Drawer 124004166



Modular toolboxes supersede the previous 3-drawer and replace the 124002668 7-drawer boxes.

These new boxes can be combined to make 6, 7, 8, or 9-drawer boxes-or any other combination of drawers.

They fit all bodies 4024 and larger.



Tunnel Box Shelf Kit

48" Box – 124004131

36" Box – 124002844

30" Box – 124004528



Straps, lumber, and oil dry shown not included

Chains, rack, and attachments sold separately

Tunnel Box Chain Rack

48" – 124004130

36" – 124002689



Chains and attachments sold separately

Additional Options

Air and Electric Storage Kit

124004258



Optional on All Units

Includes 2 red and 2 blue coiled air lines with fittings, coiled electric cable and storage rack.

Boom Angle Indicator

124002468 – Integrated

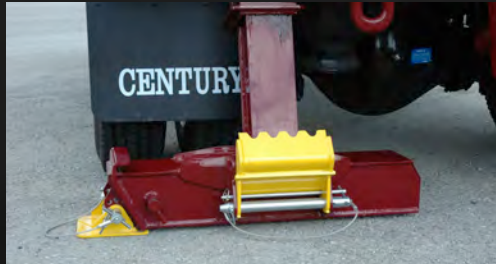
124002440 – 1060

Standard on All Rotators



Extendable Rear Spades

3212 & V 30



4024, 5130 and 5230
7035 and 9055



XP Add-Ons

XP Standard Pylon

124002830



Shown with optional lightbar and lights

XP Aluminum Tubular Pylon

124004193



XP Spade (each)

124002619



XP & RXP Bus Lift Storage System



124002525 for XP



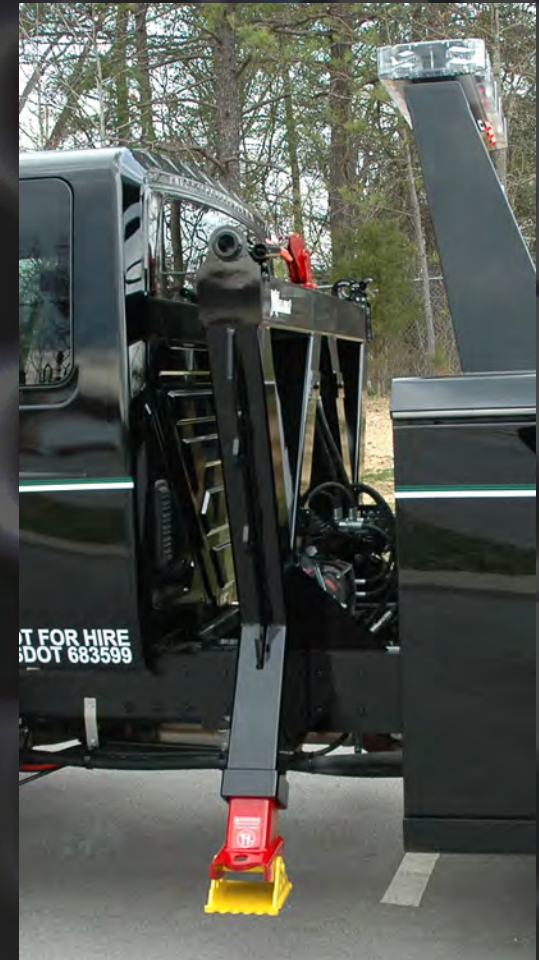
124004190 for RXP

Can be used with both 124001914 (Heavy Duty) and
124004079 (Extra Heavy Duty) lift systems

SP Side Pullers

SP 12,000 Sidepuller

124003034



Requires an additional 19" CA for Wreckers

SP 20,000 Sidepuller

124002731



Requires an additional 27" CA



Rotator Options

Rotator Controls By Model - 1130

1130

Standard Controls

Manual Controls for Boom Functions
Manual Control for All Outriggers
Wireless Underlift Remote
Non-Backlit Control Station

Optional Controls

Proportional Controls with Wireless Boom Controller
Control Stations are Backlit
Electric Outrigger Controls
Passenger Side Manuals Controls Now Optional

Optional Winches

35K Main Winches Upgrade

Not Available with Turret Drag Winches

Optional 25K Belly Drag



Rotator Controls By Model - 1140

1140

Standard Controls

Manual Controls for Boom Functions
Wireless Underlift Remote
Manual Control for All Outriggers
Non-Backlit Control Station
(Room for 1 Optional Auxiliary Drag Winch)

Optional Controls

Proportional Controls with Wireless Boom Controller Control
Stations are Backlit
Electric Outrigger Controls
(Up to 3 Auxiliary Winches)

Optional Winches

Optional 35K or 50K Belly Drag

Or

Dual 15K Turret Drag Winches (Requires Optional Controls)

Dual 15K Turret Drag Winches with a 35k/50K Belly Drag
(Requires Optional Controls)

RXP

Standard Controls

Manual Controls for Boom Functions
Wireless Underlift Remote
Manual Control for All Outriggers
Non-Backlit Control Station
(Belly Drag Not Available with Standard Controls)

Optional Controls

Proportional Controls with Wireless Boom Controller Control
Electric Outrigger Controls
Stations are Backlit
(Up to 3 Auxiliary Winches)

Optional Winches

Optional 35K or 50K Belly Drag

Boom Turret Drags Not Available with the RXP Option

Rotator Controls – 1060S, 1075S & S2

Standard Controls

Manual Controls for Boom Functions
Wireless Underlift Remote
Manual Control for All Outriggers
Non-Backlit Control Station
(Room for 1 Optional Auxiliary Drag Winch)

Optional Controls

Proportional Controls with Wireless Boom Controller Control
Electric Outrigger Controls
Stations are Backlit
(Up to 4 Auxiliary Winches)

Optional Winches

Optional 35K or 50K Belly Drag or Dual 35K Winches

And/or

Dual 22K Turret Drag Winches

Rotator Standard Controls

1130, 1140, 1060S, 1075S



Allows for a maximum of 1 deck drag winch. Not available with two or more auxiliary winches. Includes manual control handles for all outriggers

Rotator Proportional Lighted Controls

New Units See Matrix

Includes LH Only Manual Controls-Includes Panels For Both Sides As Shown
(Also Available As A Field Retrofit Kit 124002824)



Driver Side



Passenger Side

Proportional Controls Include electric control switches for all outriggers

Optional Passenger Side Manual Lighted Controls Upgrade

A Proportional system is required for use with this add-on option

New Units 124002803

(For Field Retrofit Use 124002800 -Only Includes Lighted Panels For Both Sides)



This option adds manual controls to the passenger side and replaces the panels as shown on the lower right of the previous slide.

Colored LED Control Lamps



Standard on all lighted control rotators.
Has colored LED lamps to identify switch functions.

Optional Colored control handles also shown

Rotator Controls Matrix

Determine which model in the red, then choose the number of drag winch(es) desired in black for that model. Continue to the right on the same line and select one of the numbers in the either of the green columns, the first number is for non-lighted controls, the second pair is for lighted/proportional controls. Based on your selection, you will need all the part numbers listed in that row in the blue boxes. To add manual/lighted controls to the passenger side, you need to add 124004484 to your proportional controls.

Model	Number of Drag Winches	Standard Controls, Non-Lighted	Proportional Controls, Lighted	25k Drag	35k Drag	50k Drag	Dual 35K Drag	50k Drag	Dual 35K Drag	Dual 15K Turret 1140	Dual 22K Turret 1060S or 1075S/1075S2
1130	0	124004211	N/A	-	-	-	-	-	-	-	-
1130	1	124004211	N/A	124004229	-	-	-	-	-	-	-
1140	0	124004208	SEE BELOW	-	-	-	-	-	-	-	-
1140	1	124004208	SEE BELOW	-	124002628	-	-	-	-	-	-
1140	2	N/A	SEE BELOW	-	-	-	-	-	-	124004201	-
1060S/1075S/1140	0	124002588	124004482	-	-	-	-	-	-	-	-
1060S/1075S/1140	1	124002588	124004482	-	124002628	-	-	-	-	-	-
1060S/1075S/1140	1	124002588	124004482	-	-	124002623	-	124004429	-	-	-
1060S/1075S/1140	2	N/A	124004482	-	-	-	124002600	-	124004415	-	-
1060S/1075S/1140	2	N/A	124004482	-	-	-	-	-	-	-	124004214-1060S 124004212-1075S
1060S/1075S/1140	3	N/A	124004482	-	124002628	-	-	-	-	-	124004214-1060S 124004212-1075S
1060S/1075S/1140	3	N/A	124004482	-	-	124002623	-	124004429	-	-	124004214-1060S 124004212-1075S
1060S/1075S	4	N/A	124004482	-	-	-	124002600	-	124004415	-	124004214-1060S 124004212-1075S

Dual 22K Turret Drag Winches

124004212 - 1075S and 1075S2

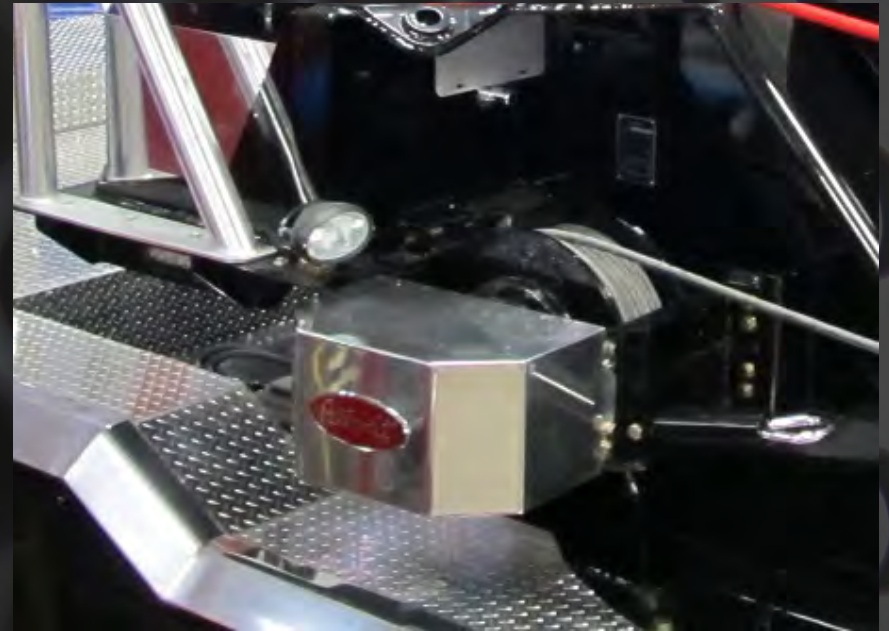
124004214 - 1060S



For customers who may want to add the dual turret winches at a later date, factory provisions can be added on a new unit, contact the factory for details.

22K Winch Covers

124004533 (pairs)



Kenworth or Peterbilt emblem shown is not included

Dual 15K Turret Drag Winches

124004201 for (1140 Only)

An 1140 can have the following winch combinations:

2 Main Winches

2 Main Winches and 2 - 15K Turret Drag Winches

2 Main Winches and 1 - 35K Belly Drag

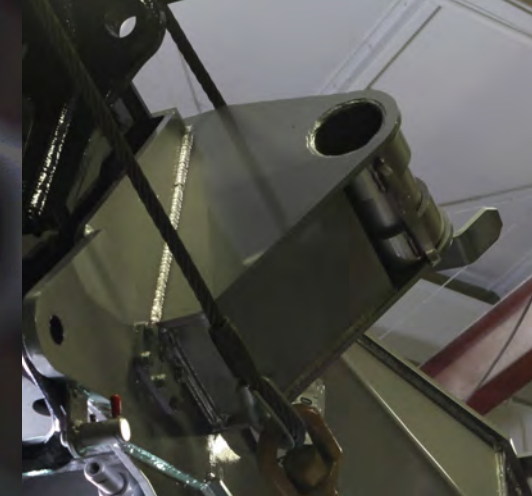


For customers who may want to add the dual turret winches at a later date, factory provisions can be added on a new unit, contact the factory for details.

Provisions - Turret Drag Winches

Turret Drag Provisions give you the mounting plates, plumbed hydraulic lines and boom end weldment (not the boom end swivels).

1140 – 124004201
1060S – 124004189
1075S – 124004188
Requires Appropriate Controls



Turret Provisions give you everything but the Winches, Cables and Boom End Swivels.

1130 25K Belly Drag Winch

Requires appropriate controls



35K Also Available

Belly Drag Options

35K – 124002628

1140, 1060S, 1075S

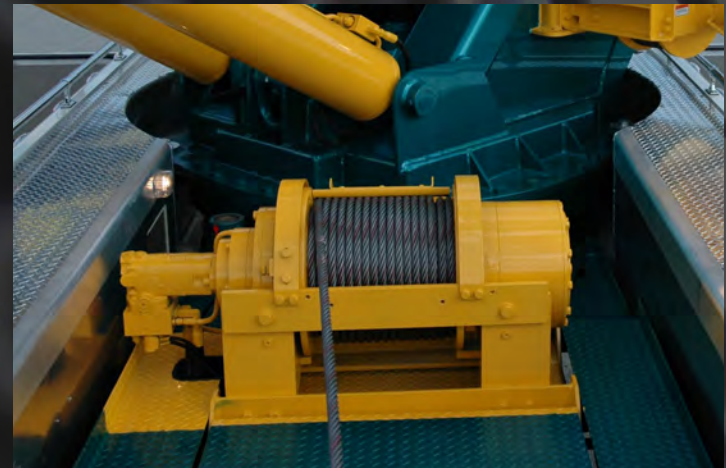
Requires Appropriate Controls



50K – 124002623

1060S and 1075S Only

Requires Appropriate Controls



Dual 35K Belly Drag Winches

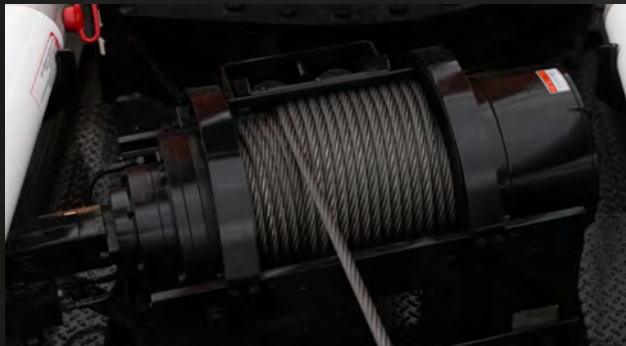
124002600

Requires appropriate controls-1060S/1075S Only



Dual H – Belly Drag Options

Single 50K



Dual 35K



1140 RXP



Note new toolbox under legs-now standard (1 each side)

Rotator D-Ring Package

124004461 (9 pieces total) (1060S/1075S2/1075S only)



Chrome D-rings shown are additional cost

Note-this replaces 124002750, 124002762, and (2 qty)124002413

Rotator Tailboard Options

Diamond Plate Tailboard Alum Pkg 124002595
Smooth Plate Tailboard Alum Pkg 124004185



Standard D-Rings

(Additional D-rings included in 124004461 shown)

1130 & 1140 Underlifts

Standard LDU

139" Reach



Optional LDU Lowrider

148.5" Reach



Optional on 1130 and 1140 as 124004202

SDU-4 – 143.5” Reach

Standard on 1060, 1060S, 1075S2, 1075S

Optional on the 1140 - 124004192

Not available on the 1130



SDU-4 Lowrider – 165.5” Reach

Optional on 1060, 1060S, 1075S2

Optional on the 1140 - 124004191

Not available on the 1130



HHU – 135” Reach

Standard on 1075S Dual H-beam



HHU Lowrider – 141” Reach

Optional on 1075S Dual H-beam



HHU Street and Coach Versions Available

H-Beam Front Outriggers

Optional on All Rotators

3-Stage (262")– 1140, 1060S, 1075s - 124004152

2-Stage (212") – 1130 and 1140 - 124004151



Note holes that allow legs to be pinned fully in or out during a side pull

Rotator 4-Stage Rear Outriggers

Standard – 1140, 1060S and 1075S



Not available on 1130, 1130 comes with 3-Stage Version

H-Beam Outrigger Cover Kit (pr)

124004383



H-Beam Enlarged Pad

124004544 Dual H-Beam
124004545 Front H-Beam Only



Rotator Front Spade Attachment

124002691 (each)(Top Beam Outriggers)
Does not Fit H-Beam Enlarged Pad



H-Beam Spade Attachment

- 124004175 (each) (H-Beam Low Outriggers)

Will not work with Enlarged Pad Option



Note Product Feature of H-Beam Low Outriggers, Standard Tieback Lug for Screw-Pin Shackle
Shackle not included

Rotator Winch-Bucket Alum Dress-Up

Diamond Plate 124002788

Smooth 124004110

For 1060S and 1075S



Includes 5 pieces

Personalized Winch Bucket Dress-Up Kit

124002807 (includes 124002788)

Diamond Plate Only

For 1060S and 1075S, not available on 1130/1140



Rotator Winch Bucket Aluminum Dress Up Kit

Smooth 124004210
For 1130 & 1140



Includes 5 pieces

Narrow Battery Box

124002763



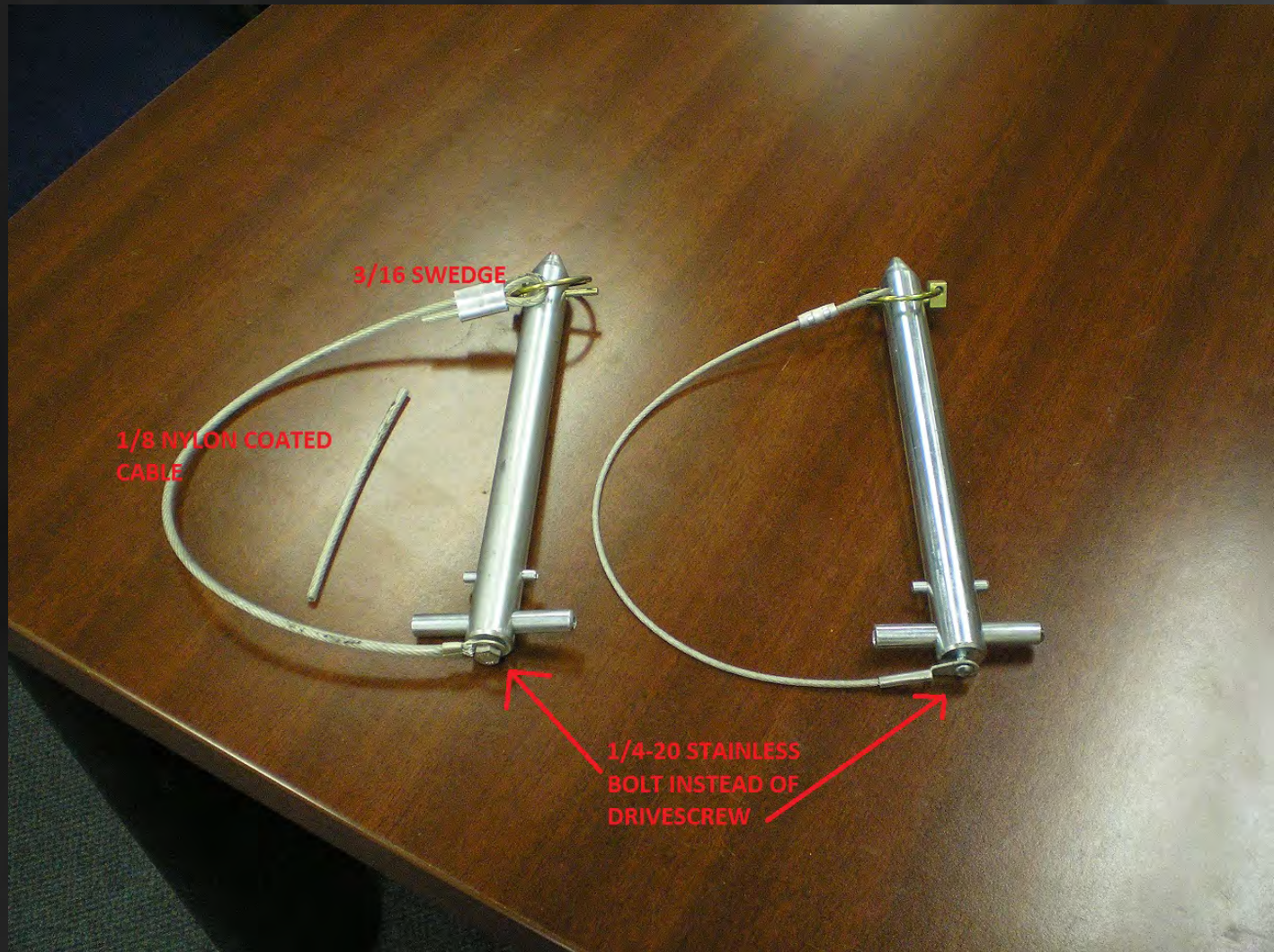
Updated Standard Features

5x5 Fabricated Crossbar

5130 and Larger, including LDU and SDU-4



Larger Tethers on Pins



Underlift Bump Stops

(bolted instead of welded)



Xylan Coated Pins



Xylan pins are used on 3212 and larger units.

Xylan coatings provide lubrication and controlled friction, wear resistance, heat resistance, nonstick and release properties and, at the same time, can also protect from corrosion.

Xylan pins do not eliminate the need for grease.

2.5 Degree, 4-Stage Rear Outriggers



Retrofittable features for Older Units

Underlift Heel Protection Plate

Now standard Part Numbers for Retrofit



124004464 - 14" Wide -
SDU4 and Coach Lowriders (7035, 9055, HHU, and SDU4)

124004465 - 9 1/2" - Wide - 4024

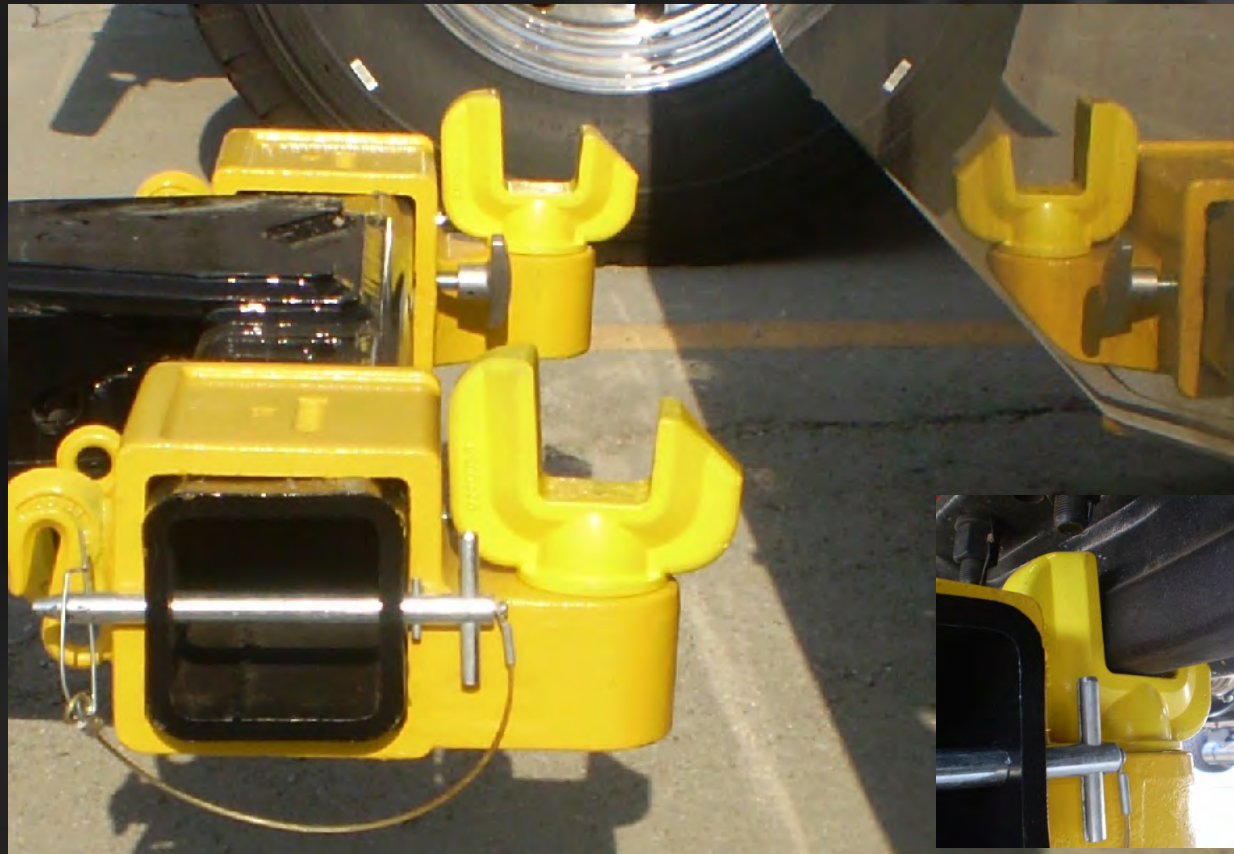
124004466 - 10 1/2" Wide - 5130, 5230, 7035, HHU

124004467 - 17" Wide - Street Lowriders (7035, 9055)

124004468 - 12" Wide - 9055, Vulcan

Axle Fork Kit

Standard on all units 3212 and larger- 124004454



'06 Tail Retrofit Kit – Fits 02-06 Bodies

124002839 Rotator

124002840 Non-Rotator



SDU Tilt Cylinder Remote Lube

Retrofit Kit 124003026

