

Miller
INDUSTRIES



Vulcan Large Wrecker

Electrical and Lighting Options

MMO System

Optional – V-50, V-70 and V-100
Standard with XP 850



Three Solid-State mVECS for wiring junctions, Located in drivers side forward toolbox or on the turret for a Rotator.

Also new R260 remote receiver in same location, no external antenna



Two multi-function backlit touch-screen displays
(1 in the cab, 1 at the rear controls)

Wireless Remote System

NV-50, V-70, V-100
12 Function Underlift & Boom Remote



- V-30 – Option to upgrade to the 12 Function Boom and Underlift Remote

Vulcan Availability

Description	V30	NV50/V70/V100	XP 850
12 fxn wireless remote only	124004431	124004438	x
12 fxn remote and MMO power distribution	x	124004518	x
XP MMO Power distribution and remotes	x	x	124004519
XP Omit Power Distribution (incl remotes)	x	x	124004440

Red=Standard

Optional Switch Panel

124004438 – Kit for new Units – NV-50 and Larger

124004197 – Kit for new Units – V-30



174013109 – Just the Switch Panel for replacement needs, Does Not include the Underlift Switches shown above

Air PTO Override

124002680 (Sgl-Acting) NV50, V70, V100



Allows for manual PTO engagement if there is an electrical failure.

The box to the left shows the yellow knob for the pusher axle air pressure adjustment.



Flasher Control Box

- ◆ 124004140 - All Models



Five wire hookup-Requires LED lights-10A maximum
Flashes all marker lights on the wrecker body

Strip Lamp Kits



124004217
124004411
124004381
124004230
124004231
124004232
124004233
124004234
124004235
124004236

V30 VX 138
V30 VX 120
V30 138"
120" CA
182" CA/160" CB
156" CA
180" CB/Tri
200" CB/Tr
220" CB
220" Tri

Round LED Underlift Lamps

124004448 (pair) All Models - includes bracket



Double-Bulb Rectangular Halogen Work Lamps

124002723 (pair) All Models



Single Bulb Oval Halogen Work Lamps

124002725 (pair) All Models



Hella Xenon Boom Lamps

124002724 (pair)



Swivel Lamps

124002263 (pair) - All Models



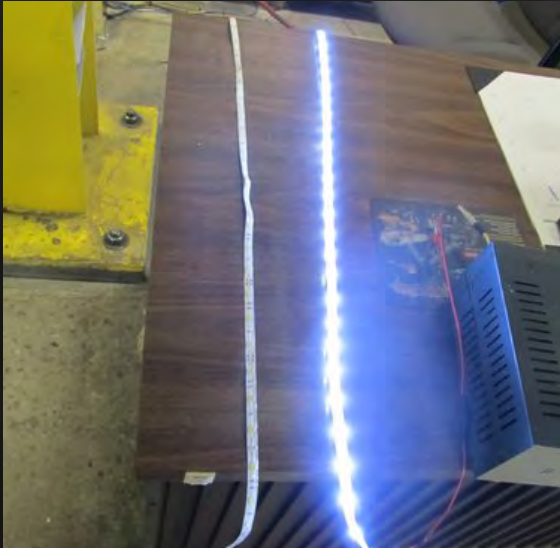
Docking Lights

124002717 (pair)



White LED Toolbox Strip Lights

Now standard on all units V30/3212 and larger



Retrofit kits available for 2002 and newer HD Bodies – 0311394

Minimum Order is 6 and then in groups of 3 (6,9,12, etc)



Whelen LED Micro-Edge Pod

124002708 (pair)





Whelen 72" 16-Head LED Lightbar

124002710 - 4 Corner Amber, Halogen Work Lights, Brake-Turn-Tail



Whelen 60" 8-Head LED Lightbar

174001984 - 4 Corner Amber, Halogen Work Lights, Brake-Turn-Tail



Whelen 60" 4-Head LED Lightbar

174002711 - 4 Corner Amber, Halogen Work Lights, Brake-Turn-Tail

M6 Clear Lens Amber LED

124004444 (pairs)



Additional Lighting Options

Flex Lamp Kit
124004452 (pair)



Domintator Lamp Kit
124004449 (pair)



Pylons

The background of the slide is a dark, charcoal grey color. It features a repeating pattern of circular and crescent shapes. The circles are arranged in a grid-like fashion, while the crescents are positioned between them. Some of the circles and crescents contain faint, ethereal blue and green colors, giving the pattern a subtle, textured appearance.

Optional 42" Aluminum Tubular Pylon for V30-VX

VX2 body - 42" - 124004117



Optional Pylon (V30 - V100)

37" – 124002740 (Dress Up Kit Included)

47" – 124003001 (Dress Up Kit Included)

Optional Pylon Aluminum Dressup Kit 946171000



Optional Lights Shown



**Stainless and Dress-up Options
Saddle Tunnel Boxes**

PolyBilt Option

Single Axle – 182” or 226”
Tandem Axle - 160”, 180”, 200”, 220”
Tri Axle - 200” and 220”



Polished Rails



The Rails are polished from the front to the rear, stopping at the top taillight.

Not Available on PolyBilt Body



1 1/4" Handrail Kit

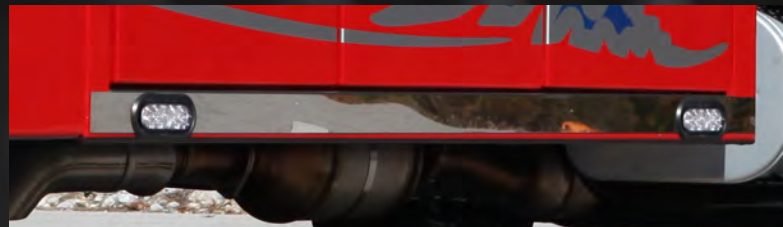
124002512



VX2 Stainless Kit

VX2 – 120" and/or 138" CA

124002613



Kenworth RH Dummy Stack

124004499



The background features a repeating pattern of dark, semi-transparent circles and crescent moons on a dark grey background. The circles are arranged in a grid-like fashion, while the crescent moons are positioned between them, creating a rhythmic, celestial motif.

Forks & Attachments

Fork Kit

Standard on:

NV-50, V-70, V-100



Forks come in Black Primer for Parts Orders

Axle Fork Kit (pr)

Standard on all units V30 and larger- 124004454



Additional Lift Forks & Attachments

Spring Lift Adapter
124001389 (pr)



Standard on:
NV-50, V-70, V-100

Fork Reducer
124002430 (pr)



Optional on All Models

Lift Eye Attachment

124002634 (pr)
Optional on All Models



U-Bolt Adapter

124002632 (pair)
Optional on All Models,
NV-50 and Larger Only



Rear Tows Only!



Additional Crossbar Attachments

Offset Fork Holder (pr)



Standard on NV-50 and Larger Units
5" Crossbar – 124001718

Standard on V-30
V-30 Crossbar - 124002516

Riser Bracket (pr)



Optional on all Models

5" Crossbar – 124001514
V-30 Crossbar - 124004078

Chain Hook Adapter (pr)



Standard on NV-50 and Larger Units
5" Crossbar – 124001420

Standard on V-30
V-30 Crossbar - 124002517

Offset Fork Holder Extension

124002230 (pr)



Offset Fork Holder is shown just for Reference

Optional on All Models, Suggested NV-50 and Larger Only

Chain Hook Adapters

124002229 (lh/rh pr)



Optional on All Models,
Suggested NV-50 and Larger Only

Pintle Hook, Tow Ball, & 5th Wheel Attachment for V30

124002645



Pintle Hook Kit

124002211

Optional for NV50 and Larger Units



King Pin Attachment Kit

124001948



Requires 124002211 Pintle Hook Kit
Optional for NV50 and Larger Units

5th Wheel Adapter Kit

124001833



Requires 124002211 Pintle Hook Kit
Optional for NV-50 and Larger Units
For Empty Trailers Only-24K Capacity

Additional Attachments

Tow Ball Adapter
124002431



Shown with Optional Convert-a-Ball Shank

Convert-a-Ball
174017093



Includes Adapter Shank Shown on the Tow Ball Adapter



Requires 124002211 Pintle Hook Kit



5x5 Bus Lift

124001914 - Optional on NV50 and Larger Units, 5" x 5" crossbar



XHD Tire Lift

Optional for 50 Ton



Field Retrofits

124002853 – Century - Includes XHD 5x5 Crossbar

124004081 – Vulcan - Includes XHD 5x5 Crossbar

For units already having a 5x5 Fabricated Crossbar

123002808 – Century and Vulcan

Bus Lift Storage System

124002587 For 5x5 Crossbar
Optional on all Units



Can be used with both 124001914 (Heavy Duty) and 124002808 (Extra Heavy Duty) lift systems

External Bus Lift Storage System

124004380 For 5" x 5" Crossbar
Optional on NV50 and Larger Units



Can be used with both 124001914 (Heavy Duty) and 124002808 (Extra Heavy Duty) lift systems

6,000 lb. L-Arm System

124001738 For 5x5 Crossbar
Optional on NV-50 and Larger Units



Accessories

Wide Load Bars

36" Wireless LED

124004494



Includes 7 Way Plug-in Transmitter

36" -

124004494 – (cord sold separately)



174019033 – 60' 7 Way Cord

Dual Color Camera Kit

124004442 - Optional on All Units

Includes the color screen inside the cab.



Tailboard Remote

124001979 - Optional on All Units



New rocker switch style replaces push-button style



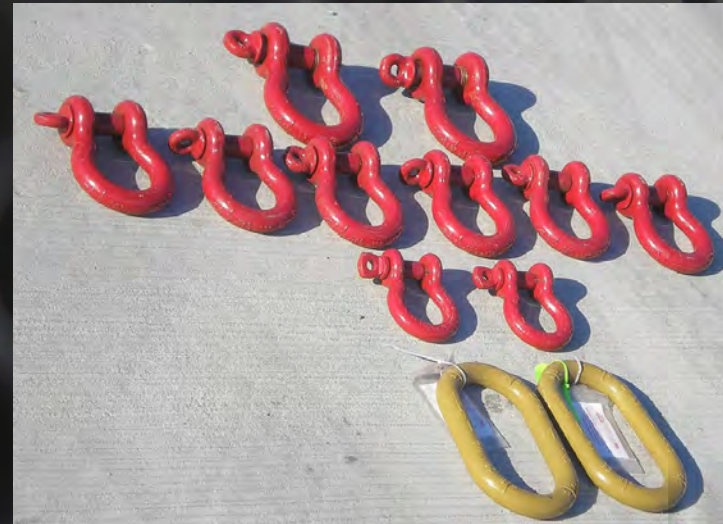
**Shackles, Straps, Chains,
Snatch Blocks
and Related Items**

Alloy Screw-Pin Shackle Kit

124004083 - The shackle kit was made to fit with the Endless Loop Strap Kit (124002697, Sold Separately)

Kit Includes:

- 2 ea) 1 1/4" Alloy Master Links 18 Ton
 - 2 ea) 1" Alloy Screw-Pin Shackles 8 1/2 Ton
 - 6 ea) 1 1/4" Alloy Screw-Pin Shackles 12 Ton
 - 2 ea) 1 1/2" Alloy Screw-Pin Shackles 17 Ton
- All Made in USA



Optional on all models

Endless Loop Strap Kit

124002697



COLOR CODE	CAPACITIES IN POUNDS			MINIMUM LENGTH	INCLUDES TWO EACH
	VERTICAL	CHOKER	BASKET		
YELLOW	8400	6720	16800	3 FT	4 FT, 6FT
RED	13200	10560	26400	3 FT	8 FT, 12FT
BLUE	21200	17000	42400	6 FT	12 FT, 16 FT



Optional on all models

(124004521 is the same kit but without the blue straps, for V-30)

Chain Kit

174025093



- 2 - 5/16" - 3/8" Ratchet Binders
- 2 - 5/16" x 10' Chains
- 2 - 5/16" x 20' Chains
- 2 - 3/8" x 10' Chains
- 2 - 3/8" x 20' Chains
- 2 - 1/2" x 10' GR100 Chains
- 2 - 1/2" x 20' GR100 Chains

Optional on all models, suggested for NV-50 and Larger Units
(124002523 is the same kit but without the 1/2" chains, for use with V-30)

Ratings Labels

Decals only 0501656
(included with 174025093 and 124002523 Chain Kits)

CHAIN RATING

GRADE 100 - BLUE HOOKS

SIZE:	WORKING LOAD LIMITS
• 1/2"	15,000 LBS
• 5/8"	22,600 LBS

GRADE 70 - GOLD HOOKS

SIZE:	WORKING LOAD LIMITS
• 5/16"	4,700 LBS
• 3/8"	6,600 LBS
CHAIN BINDER	6,600 LBS

CABLE RATINGS

MAIN BOOM & DRAG WINCH

20,000 LB 5/8" X 6 X 37 IWRC XIPS
35,000 LB 5/8" X 6 X 37 IWRC XIPS

50,000 LB 3/4" X 6 X 37 IWRC XIPS
60,000 LB 7/8" X 6 X 37 IWRC XIPS

5/8" CABLE WORKING LOAD LIMIT: 11,600 LBS
5/8" CABLE BREAKING LOAD LIMIT: 41,200 LBS

3/4" CABLE WORKING LOAD LIMIT: 16,560 LBS
3/4" CABLE BREAKING LOAD LIMIT: 58,800 LBS

7/8" CABLE WORKING LOAD LIMIT: 22,400 LBS
7/8" CABLE BREAKING LOAD LIMIT: 79,600 LBS

ENDLESS LOOP SLINGS AND SCREW-PIN SHACKLES				
SIZE/LENGTH	SLING COLOR/ USE SHACKLE	CAPACITIES IN POUNDS		
		VERTICAL	CHOKER	BASKET
1" ALLOY SHACKLE		17,000	17,000	17,000
4'	YELLOW	8,400	6,720	16,800
6'	YELLOW	8,400	6,720	16,800
1 1/4" ALLOY SHACKLE		24,000	24,000	24,000
8'	RED	13,200	10,560	26,400
12'	RED	13,200	10,560	26,400
1 1/2" ALLOY SHACKLE		34,000	34,000	34,000
12'	BLUE	21,200	17,000	42,400
16'	BLUE	21,200	17,000	42,400
1 1/4" ALLOY MASTER LINK	ALLOY	36,200	36,200	36,200

5/8" GR100 Chain Kit

124002820



Includes two each 5/8 GR100 10' and 15' long with a grab hook on each end
Optional on all models

3/8" EDOG Eliminator GR100 Chain Bridle

124004153



Optional on all models

1/2" EDOG Eliminator GR100 Chain Bridle

124004153



Optional on all models, suggested for V-100

1/2" GR100 Foundry Hook Kit

124004156 (2 Hooks, 2 Shackles)



Optional on all models - Does not include the Blue Chain

Crosby Alloy Snatch Blocks

8 Ton - 124001058



Optional on all models

Suggested for units with 35K and smaller winches

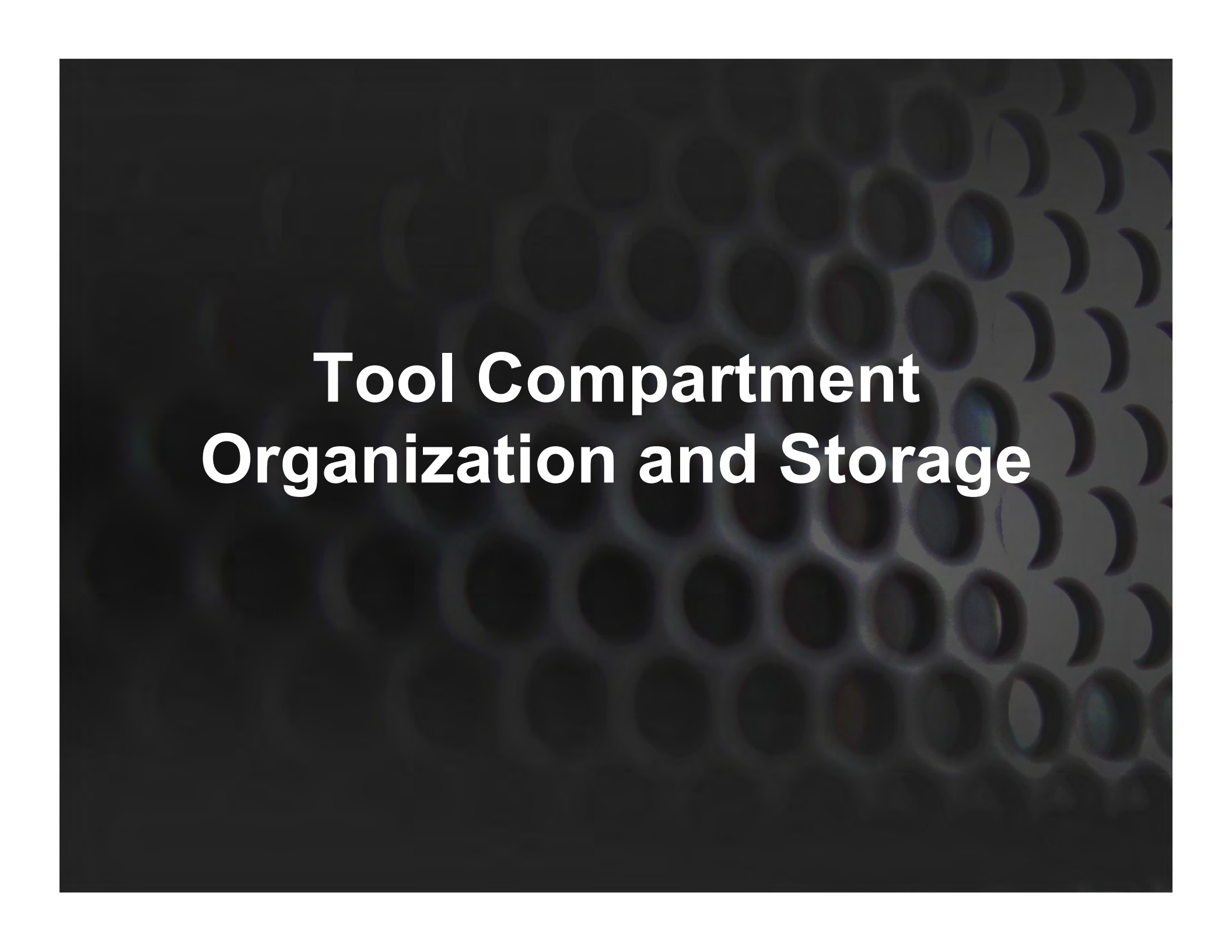
12 Ton - 124001886



Optional on all models

Suggested for units with 50K and Larger Winches

Made in USA



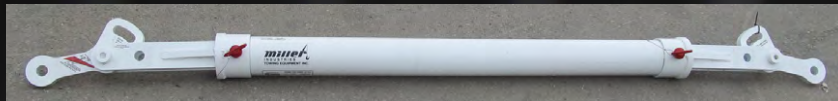
Tool Compartment Organization and Storage

Spreader Bar



124004417 (each)

Can be configured for 100", 105" and 110" lengths



Short Spreader Bar Tube –
Allows for 58", 63" and 68" lengths
124004417 (each)



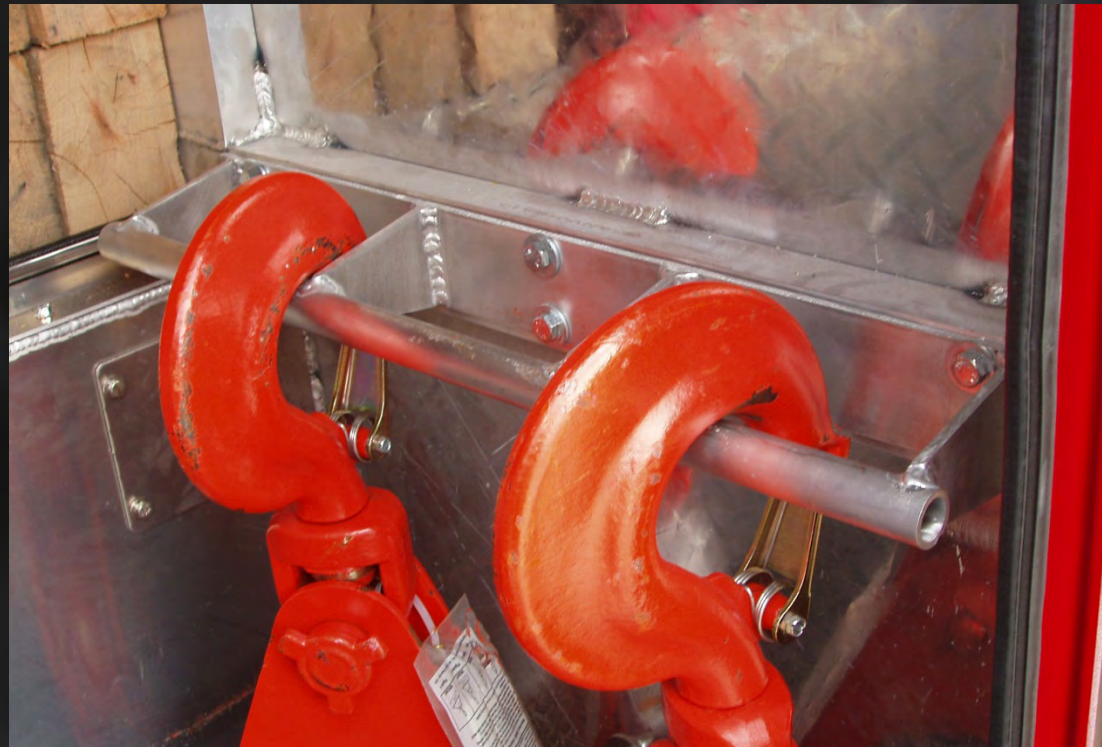
Shown with optional shackles and straps



Optional Mounting Kit - 124004436

Snatch Block Bar

124004132 (ea)



Can be used in all large tunnel boxes-snatch blocks sold separately

Dual Snatch Block Storage Kit

124004463 (ea)



Can be used in all large boxes-snatch blocks sold separately
2 kits shown-each kit contains 1 top and 1 bottom bracket

Crossover Tunnel

124004446



Modular Toolboxes



3-Drawer 124002667



4-Drawer 124004166



These new boxes can be combined to make 6, 7, 8, or 9-drawer boxes-or any other combination of drawers.

They fit all bodies NV-50 and larger.



Additional Options

Air and Electric Storage Kit

124004258



Optional on All Units

Includes 2 red and 2 blue coiled air lines with fittings, coiled electric cable and storage rack.

Boom Angle Indicator

124002468 – Integrated



Collapsible Folding Ladder

124004413



XP850 Add-Ons

XP Standard Pylon

124002830



XP Aluminum Tubular Pylon - 124004193



Shown with optional lightbar and lights

Bus Lift Storage System

124002525 For 5" Tall Crossbar



Can be used with both 124001914 (Heavy Duty) and
124004079 (Extra Heavy Duty) lift systems

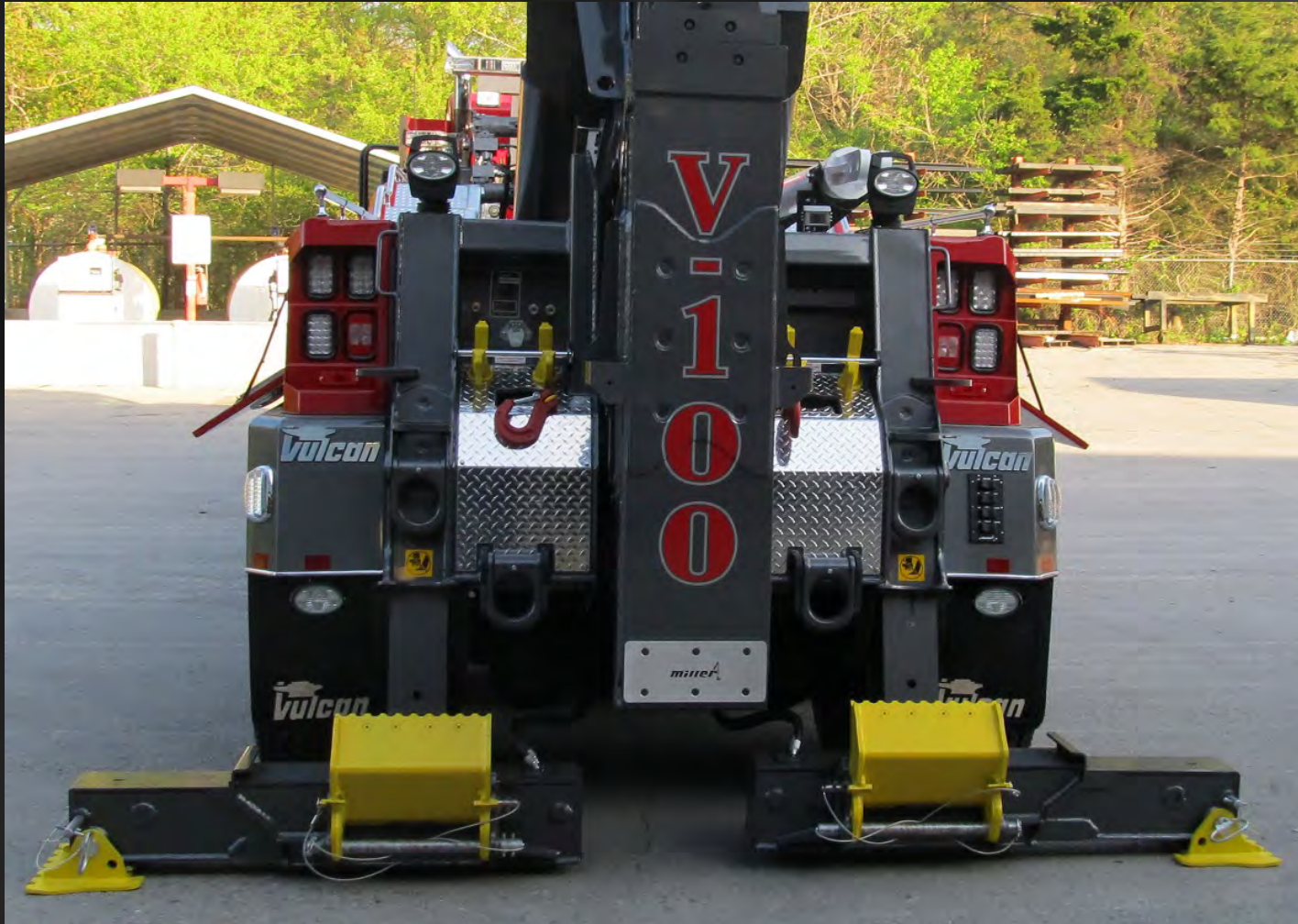
Scuff Bar (pr)

124002753



XP Rear Outriggers

124004457



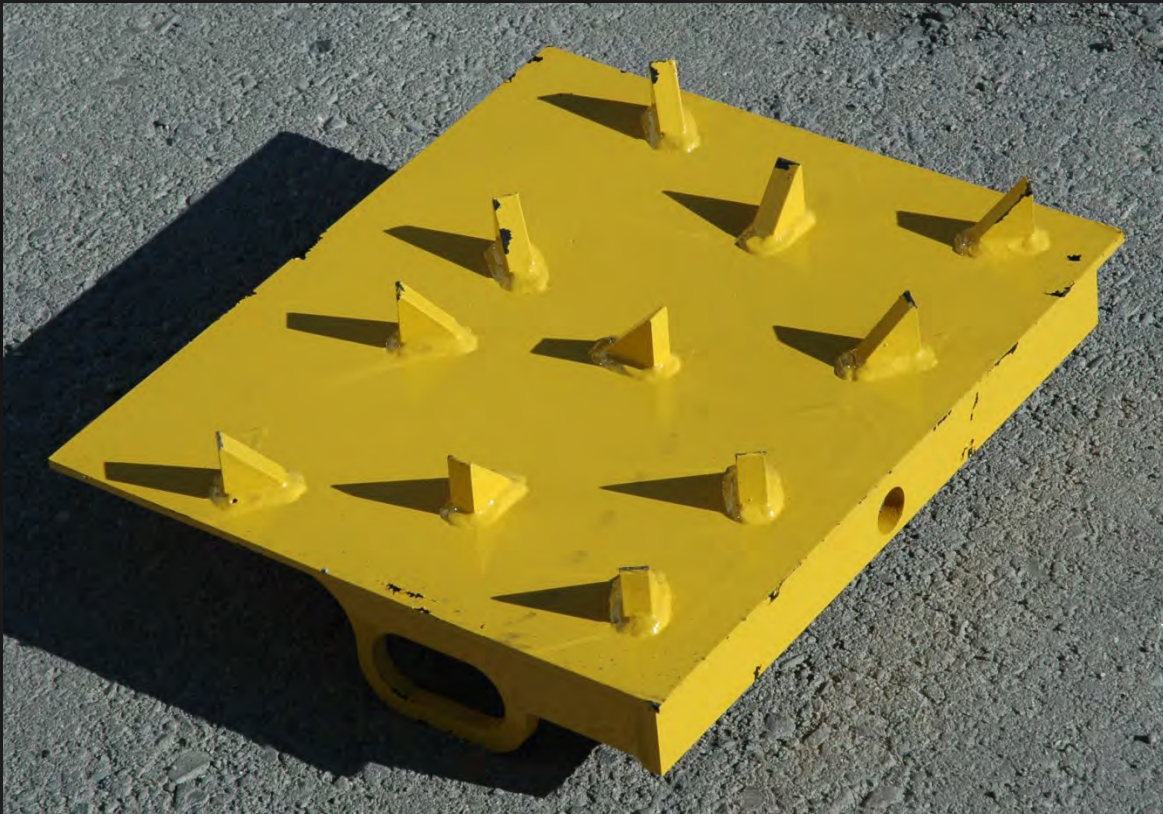
XP Spade (each)

124002619



Ground Penetrating Plate

124004091



Fits XP units
Sold each, includes a pin



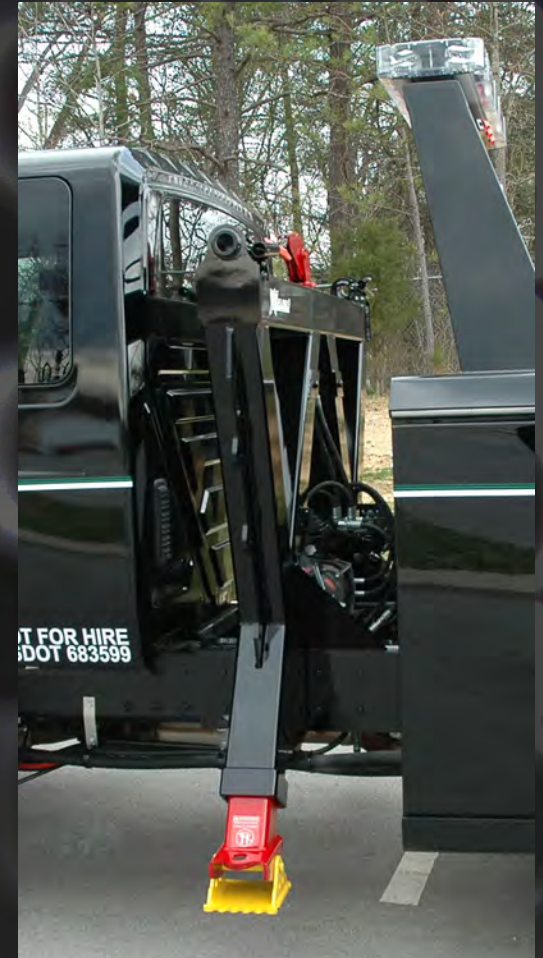
SP Side Pullers

SP 12,000 Sidepuller

124003034



Requires an additional 19" CA for Wreckers



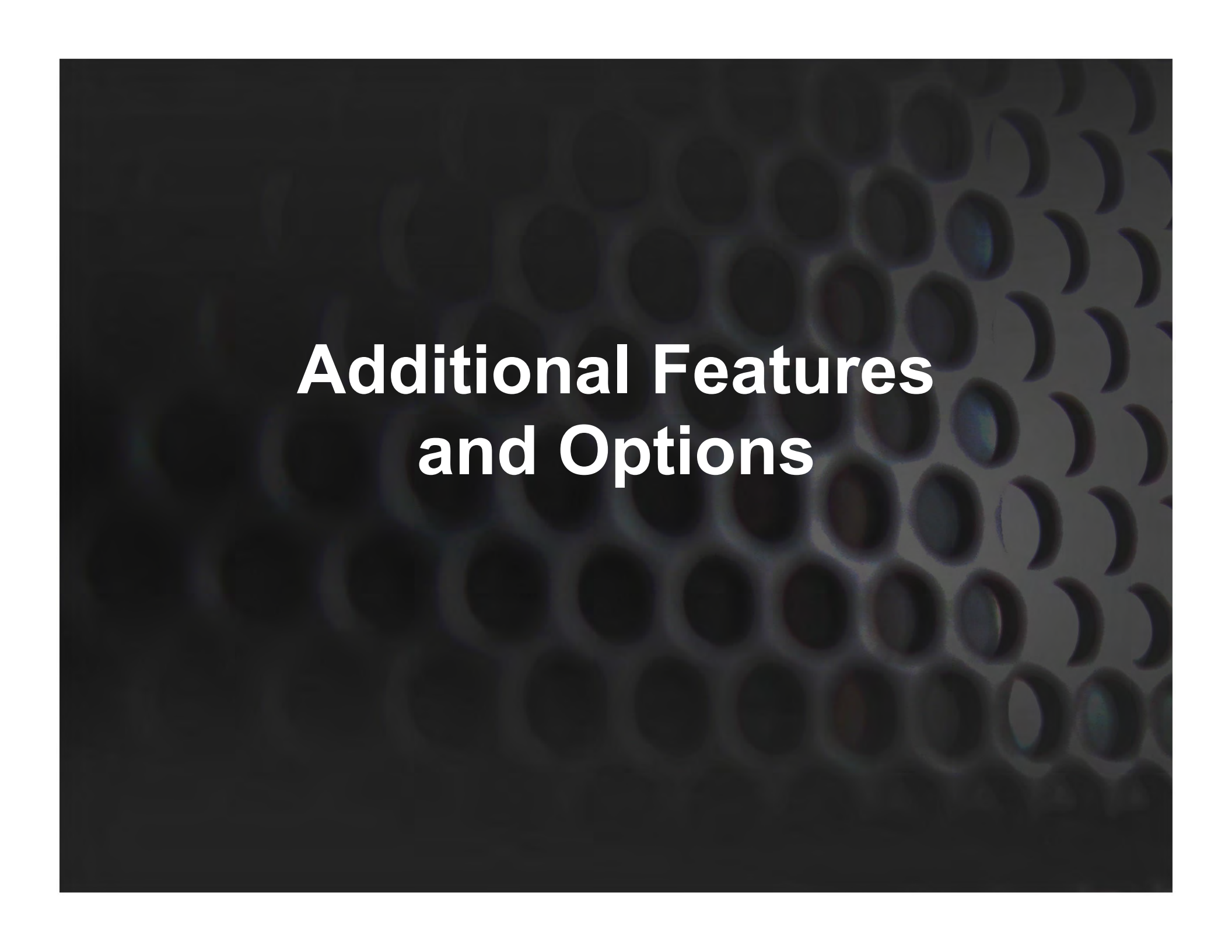
SP 20,000 Sidepuller

124002731



Requires an additional 27" CA





Additional Features and Options

Flipper Foot Option

124002850



LED Lights

Clear Lens in Tail



Lower current draw

Underlift Heel Protection Plate



Numbers provided for retrofit if desired

- 124004464-14" long
- 124004465-9 1/2" long
- 124004467-17" long
- 124004468-12" long- Most Vulcan

Tailboard Dress Up Package

NV-50 – 946961000
V70/V100 - 124004583

